

Maple Road

Niagara Falls Blvd to
Sweet Home

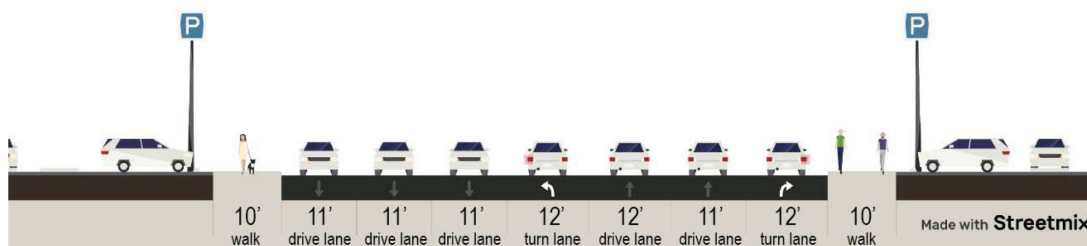
Funding Request:
\$2,682,925



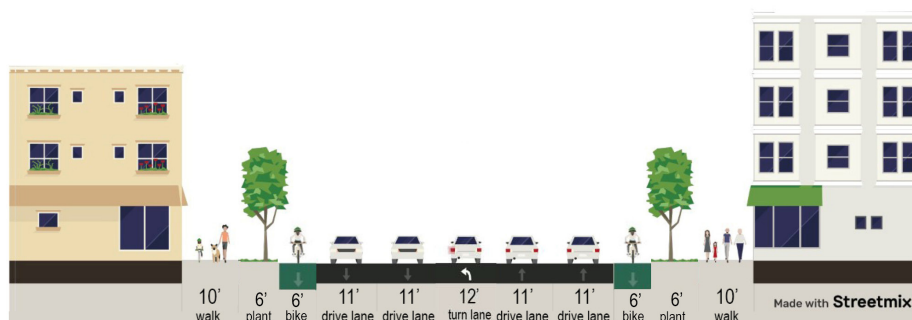
ROAD DIET AND STREETScape IMPROVEMENTS FROM NIAGARA FALLS BLVD TO SWEET HOME RD

Maple Road, which runs adjacent to multiple entrances to the University at Buffalo, is a major thoroughfare containing commercial and recreation facilities that serves residents and students from adjacent neighborhoods and draws visitors from the greater region. The corridor's status along with its current physical design, brings considerable amounts of traffic and noise which is daunting to both drivers and pedestrians. The five lane high speed design favors vehicles and rarely takes into account safe and inviting pedestrian movements or amenities. Pedestrian circulation is hindered by disconnected sidewalks, an abundance of driveways, and congested crossing locations, all of which cause major safety issues as highlighted by New York's Pedestrian Safety Action Plan. The future of Maple Road should include access management, enhanced streetscape and green infrastructure, improved pedestrian safety, and other pedestrian amenities. It should also include new and creative transportation options as identified in the GBNRTC's MTP 2050 Plan such as autonomous vehicles, customizable and on-demand mobility services, smartly enhanced multi-modal arterials (SEMA), traffic monitoring software and alternative modes of public transportation.

EXISTING CONDITIONS



PROPOSED CONDITIONS



Maple Road

Millersport to
North Forest

Funding Request:
\$8,219,005

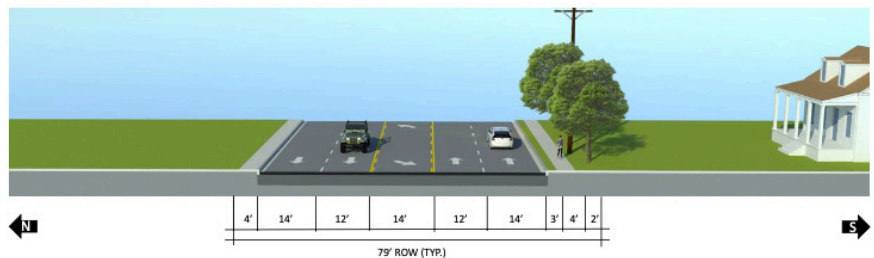
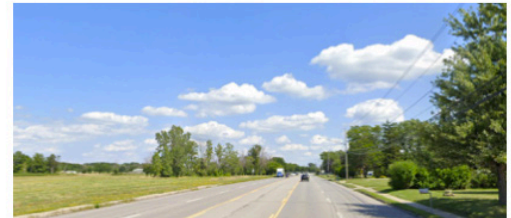


ROAD DIET AND STREETScape IMPROVEMENTS FROM MILLERSPORT HWY TO NORTH FOREST RD

CORRIDOR DESIRES:

- Lane Reductions
- Curb Extensions at intersections & selected drive-ways
- Addition of on-street parking
- HAWK Signal
- Pavement Rehabilitation
- Granite Curbing
- New Sidewalks and Streetscaping
- Landscaping and Street Furniture
- Traffic Signal upgrades

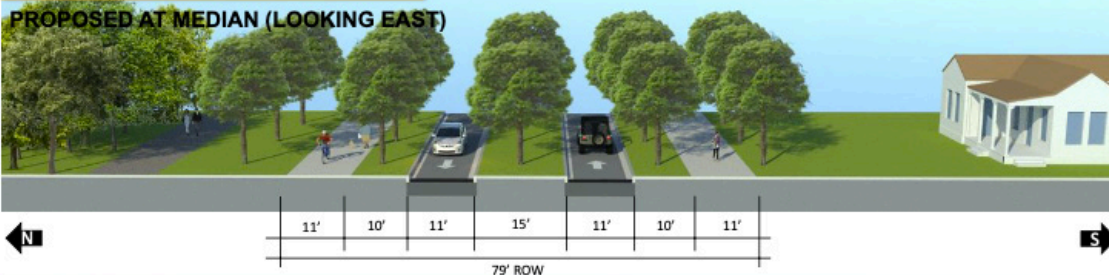
MAPLE ROAD EXISTING CONDITIONS



MAPLE ROAD

PROPOSED AT MEDIAN (LOOKING EAST)

DRAFT



PROPOSED AT LEFT TURN LANE (LOOKING EAST)

