

West Side Interceptor

Funding Request:
\$31,246,913

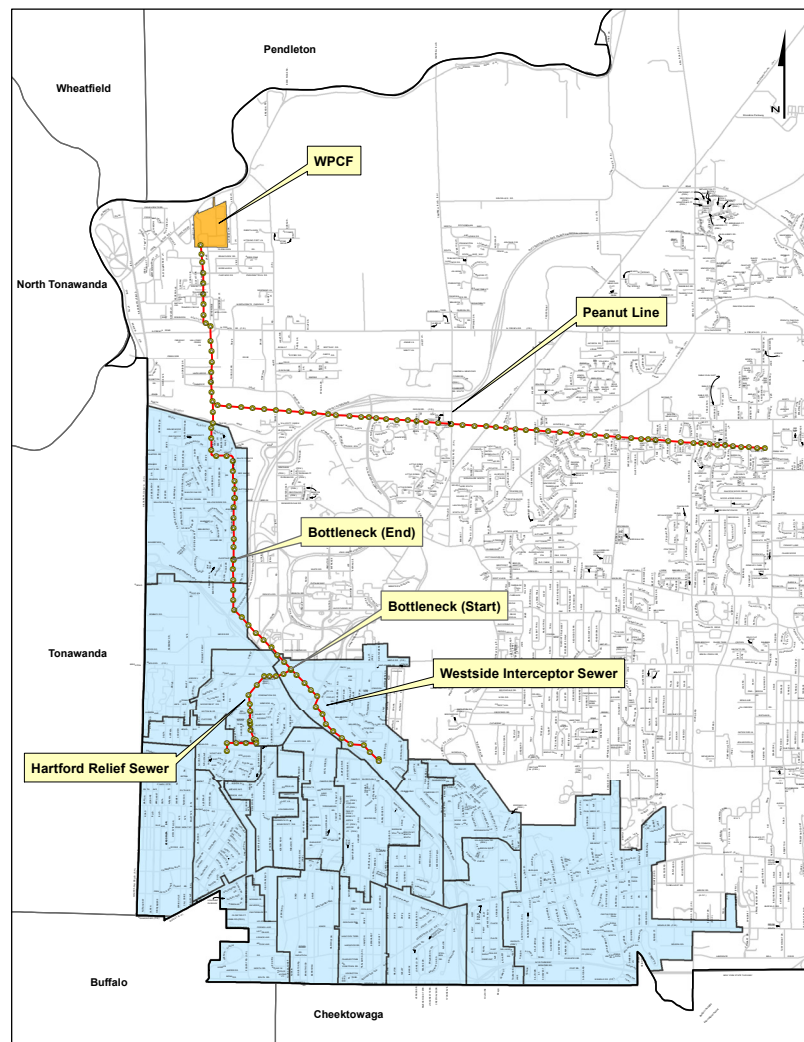
IMPROVING THE INTERCEPTOR TO ACCOMMODATE FUTURE GROWTH AND PROSPERITY

UPGRADES INCLUDE:

West Side Interceptor Pump Station Alternative

The Town is currently studying alternatives to provide capacity relief within the West Side Interceptor Sewer. A likely alternative is the construction of a bypass pump station to relieve the bottleneck in the interceptor

- A 30 million gallon per day capacity pump station within the West Side Interceptor easement area north of Maple Road at the I290
- 11,000 linear feet of 36 Inch PVC forcemain, including 1,810 linear feet of forcemain installation by boring and jacking
- A reinforced concrete chamber for the forcemain connection at the Peanut Line Interceptor Sewer



In order to accommodate the redevelopment that may arise from the new mixed-use zoning districts and the GEIS, the Town's infrastructure needs to be greatly improved. The Town's only Wastewater Treatment Plant (WPCF) is aged and requires many upgrades to maintain its current functionalities and including future flows. There is generally sufficient capacity in the local sanitary sewer systems to transmit existing and proposed flow. However, the existing West Side Interceptor is currently over capacity between Maple Road and Chestnut Ridge Road during wet weather events and requires mitigation measures to minimize surcharge conditions and guard against current and future SSOs. For storm water management, the Town needs to have more stringent requirements for new and/or re-development projects to achieve additional storage volume for post-construction stormwater management. The aging cast iron water mains also need to be replaced.